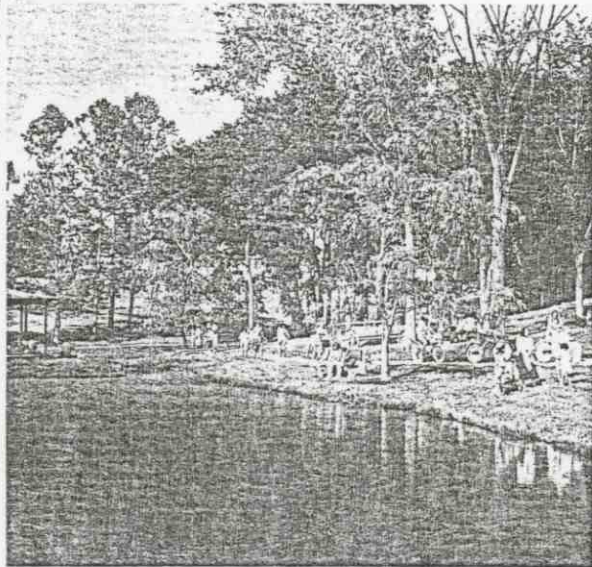


COPENHAVER



... planned
for leisure,
too

Copenhaver's private park, owned and maintained by residents, is a delightful blend of the nostalgic and the modern. On its nine acres are a one-acre pond, picnic and play areas, bicycle trails, a gazebo, tennis courts, basketball pads and private walkways. The original footbridge, spring-house and centuries-old Maryland white oaks have been retained, complementing the modern man-made facilities.

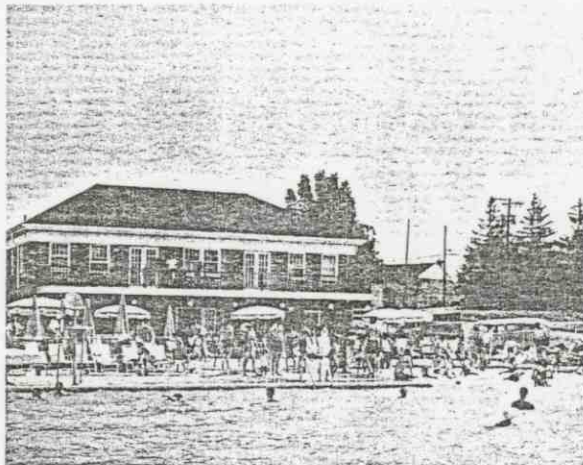
Available to the community is the Montgomery Square-Copenhaver Swim Club, with modern pool and clubhouse building.

Other recreational facilities of all kinds are easily accessible. There are Great Falls and the C & O Canal for fishing, boating, and

hiking; there is also the unusual Cabin John Regional Park, immensely attractive to youngsters and adults alike. With its kiddies' train and its original children's play areas, ball fields, tennis courts, picnicking areas, bridle and hiking trails, it is an ideal family recreational center.

For more sophisticated outings, there is legitimate theater at Shady Grove Music Fair, Inverness Playhouse, and the Rockville Civic Center, all within minutes from Copenhaver. Metropolitan Washington, with its many attractions, social, historical and educational, is a pleasant drive away.

Obviously, life at Copenhaver can be as varied as the individual or individual family wishes. The opportunities are there; the choice is up to you.



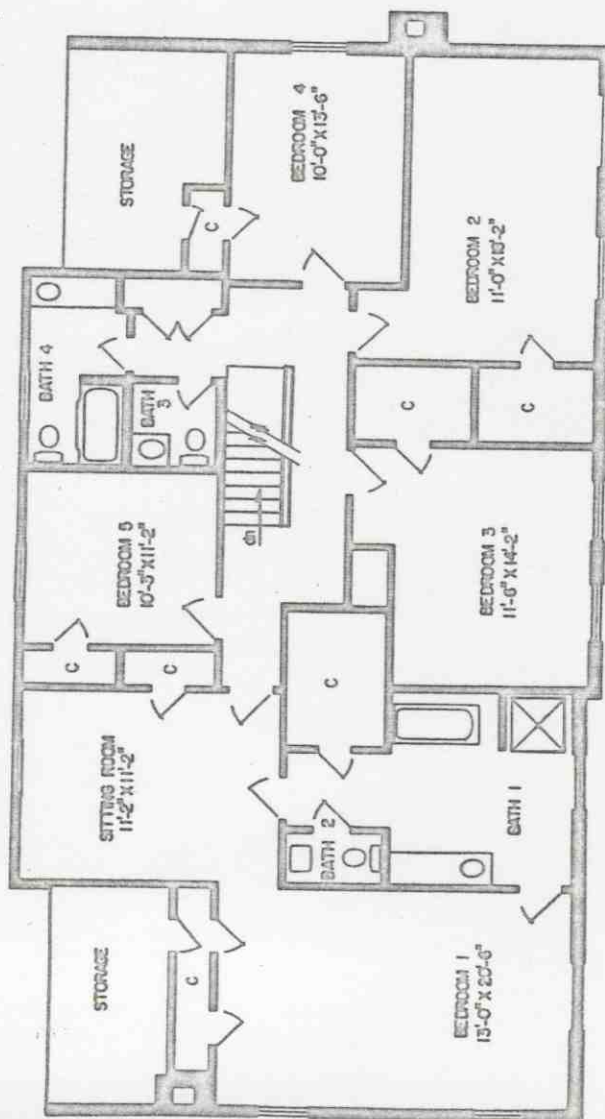
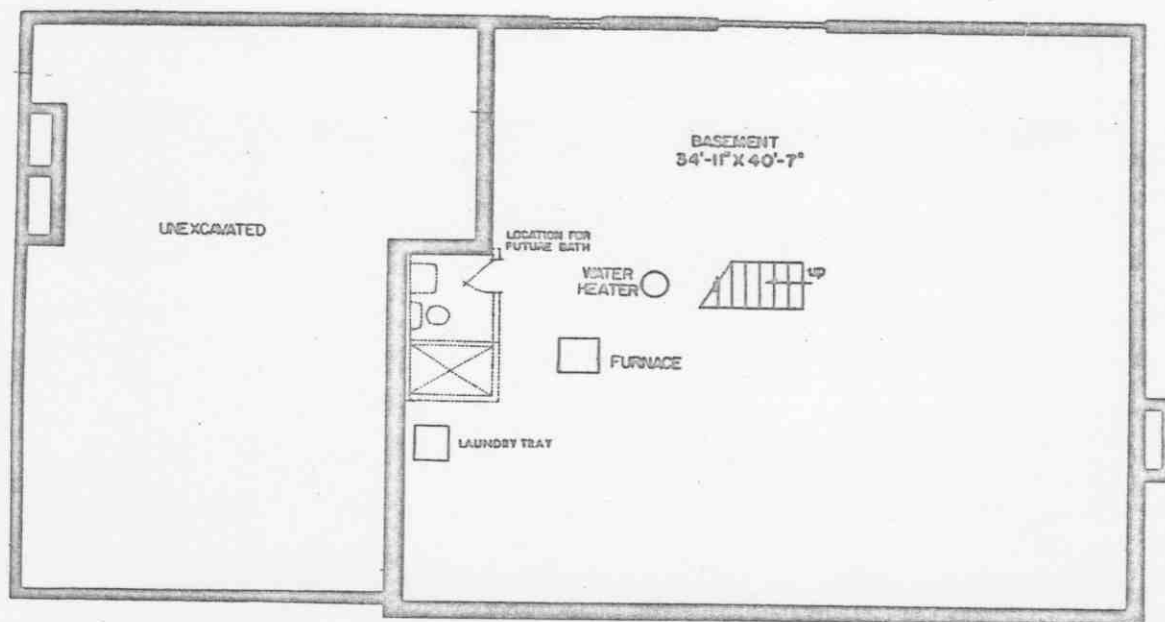
Old Line
PROPERTIES, INC.

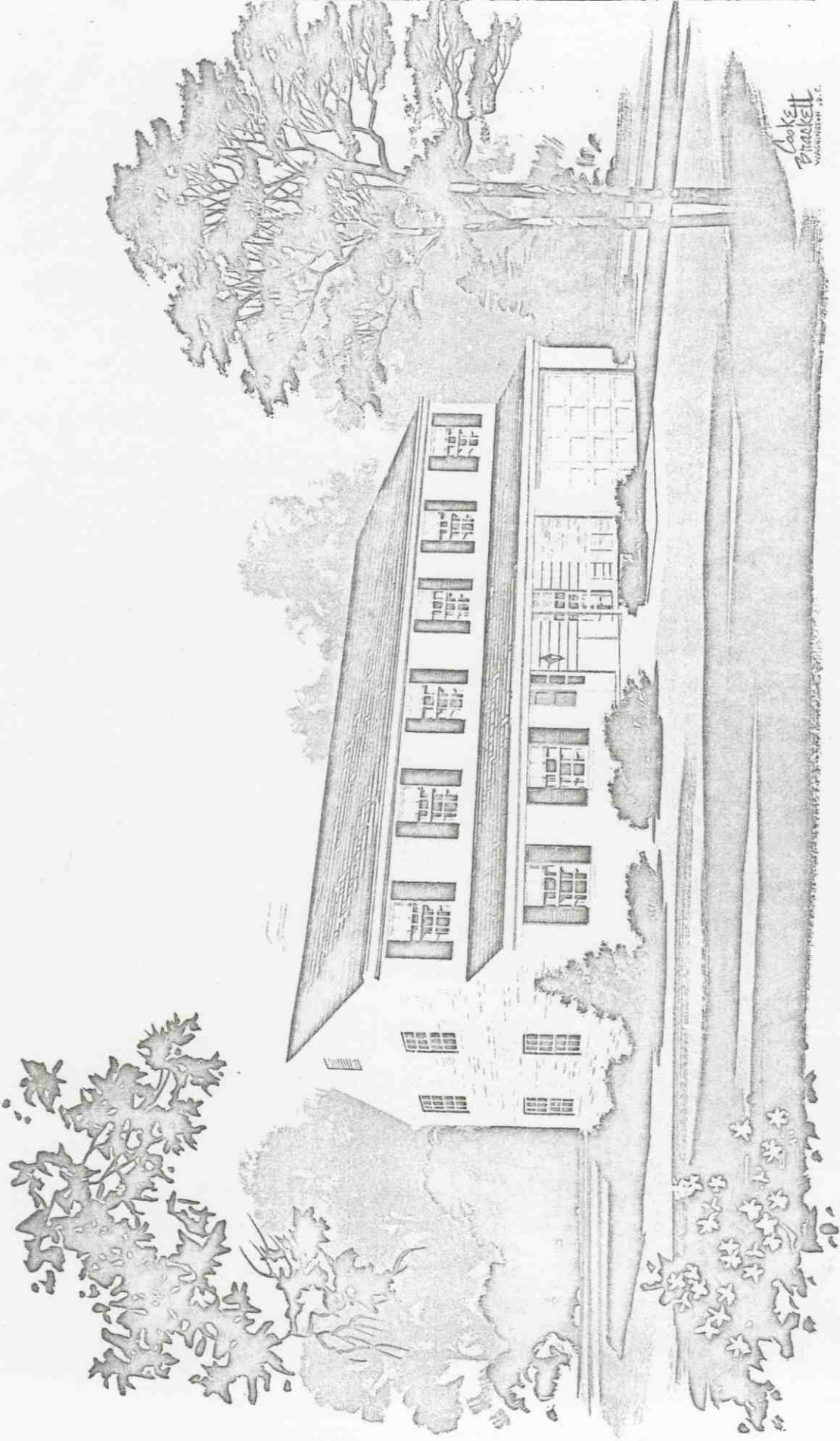




THE ALLEGANY

Handwritten signature

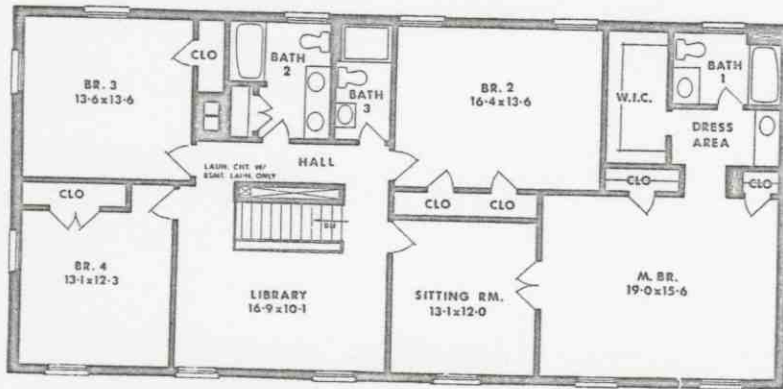




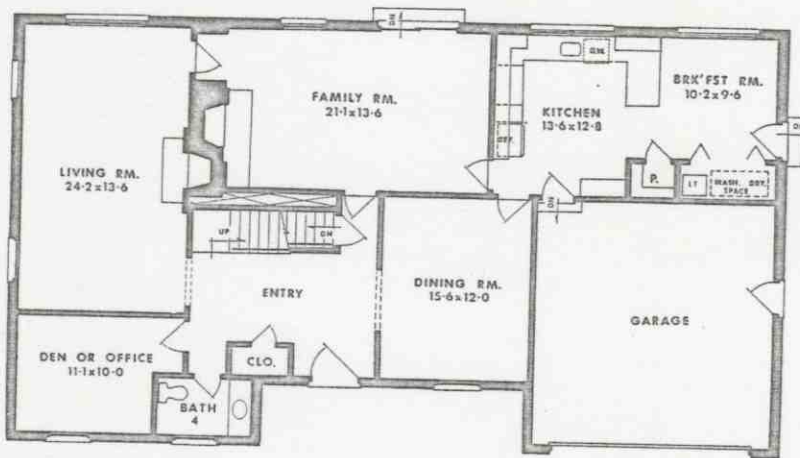
Coakley
Brackett
WASHINGTON, D.C.

THE KENT

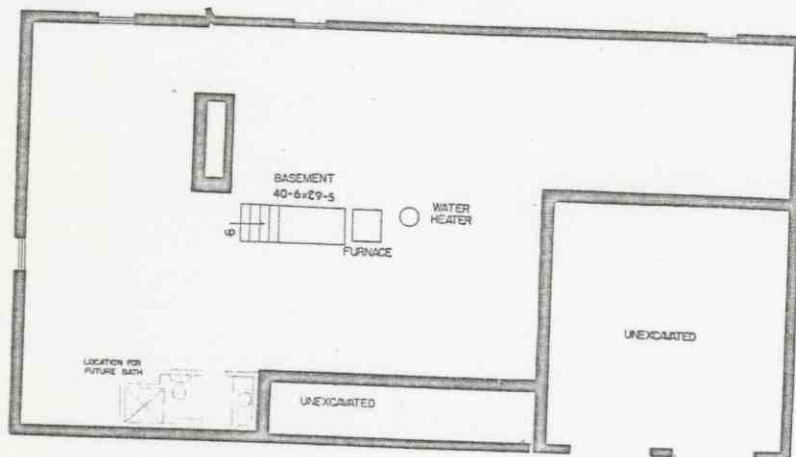
March 1972



Second Floor



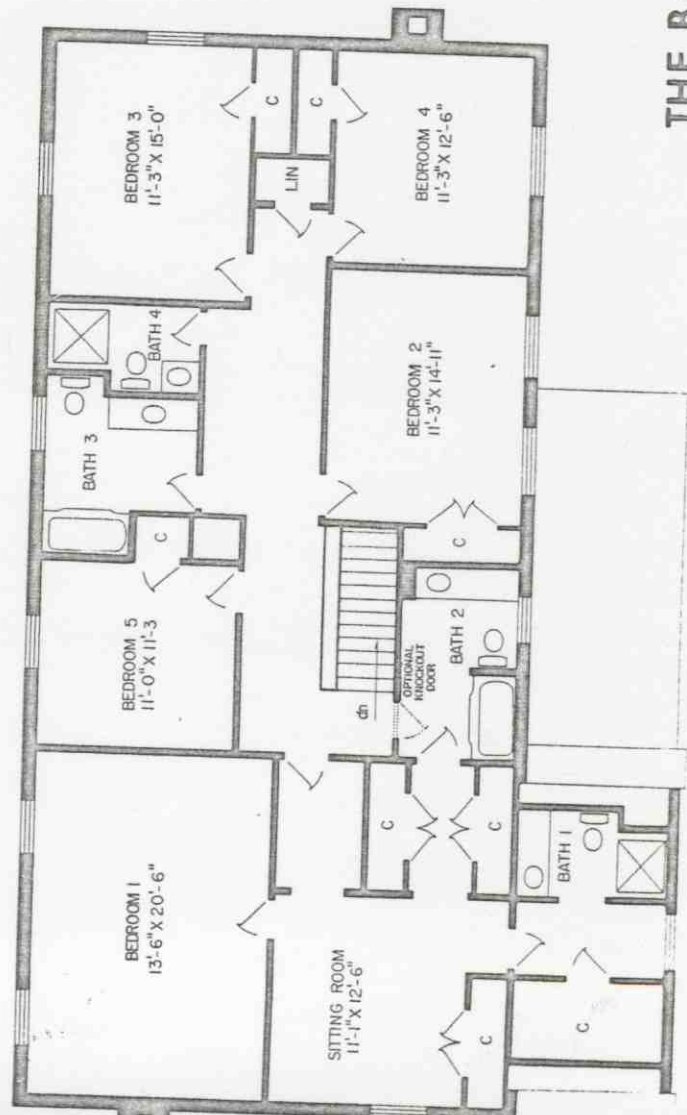
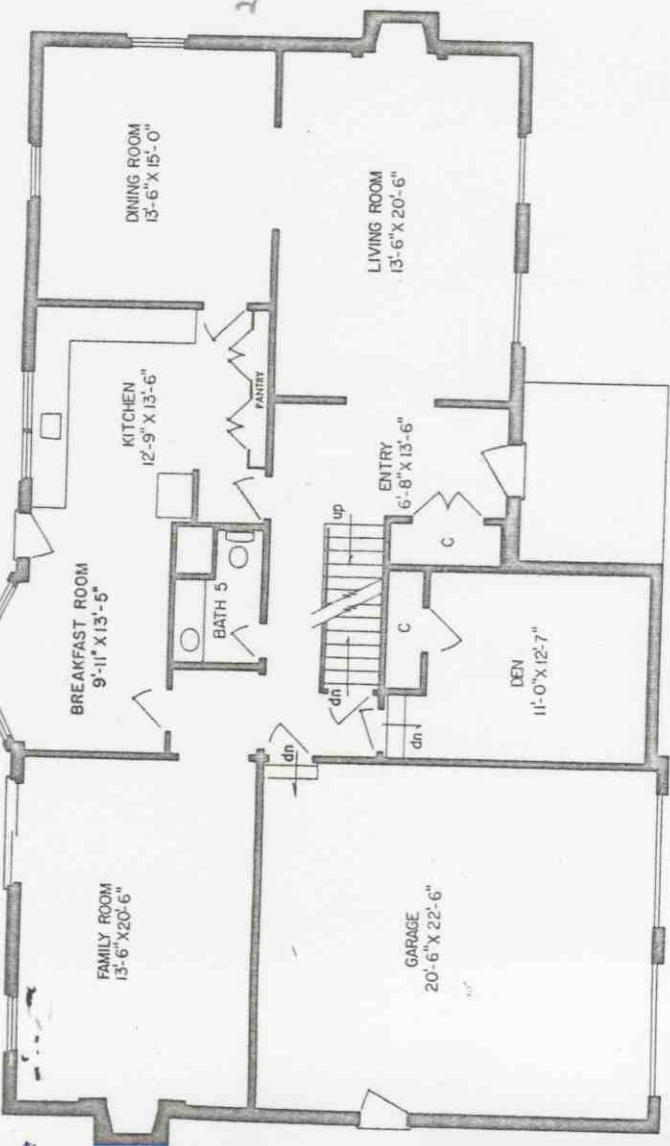
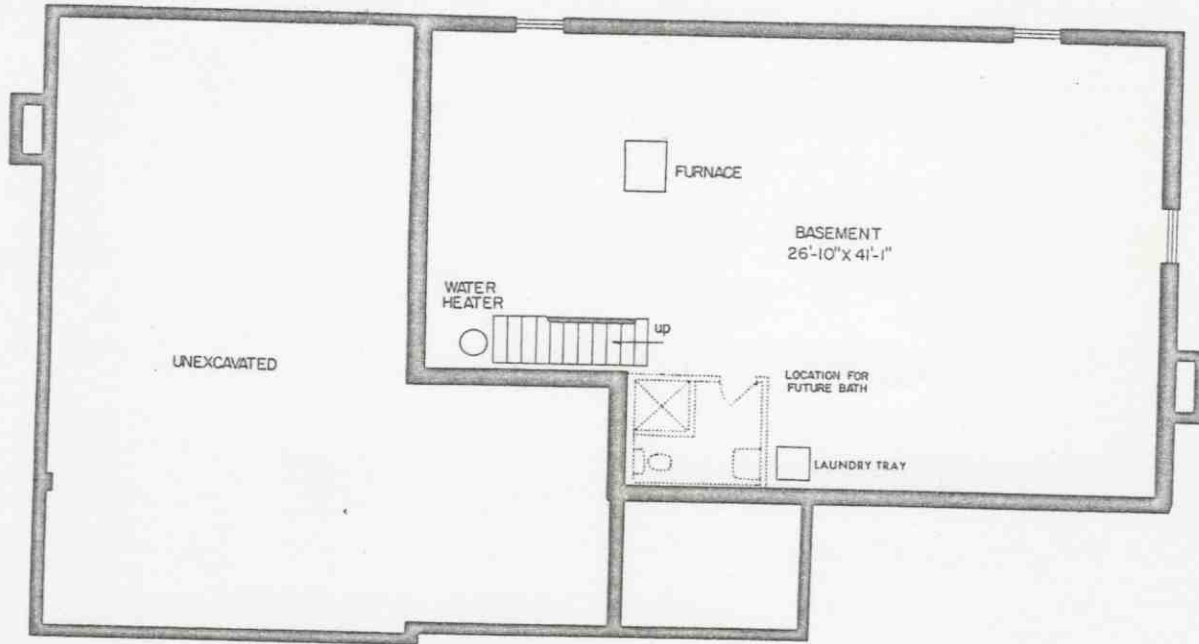
First Floor



Basement



THE BALTIMORE



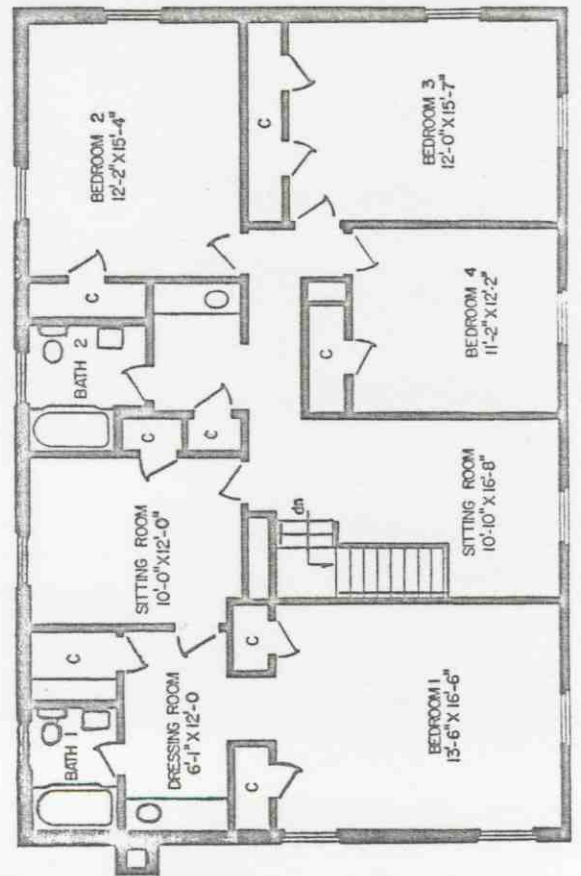
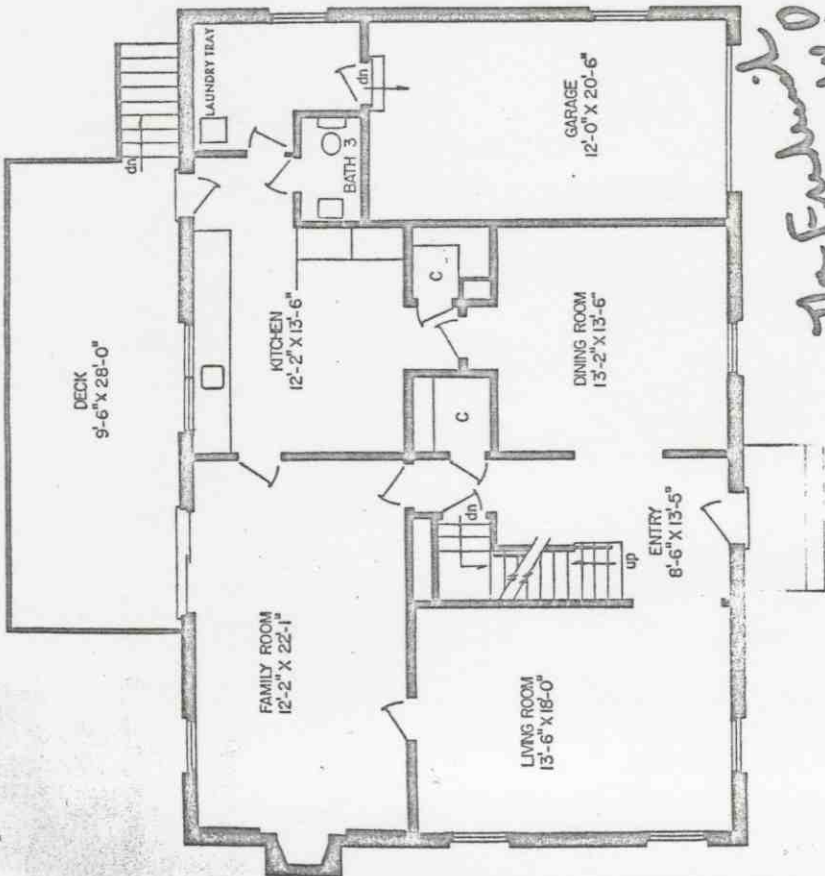
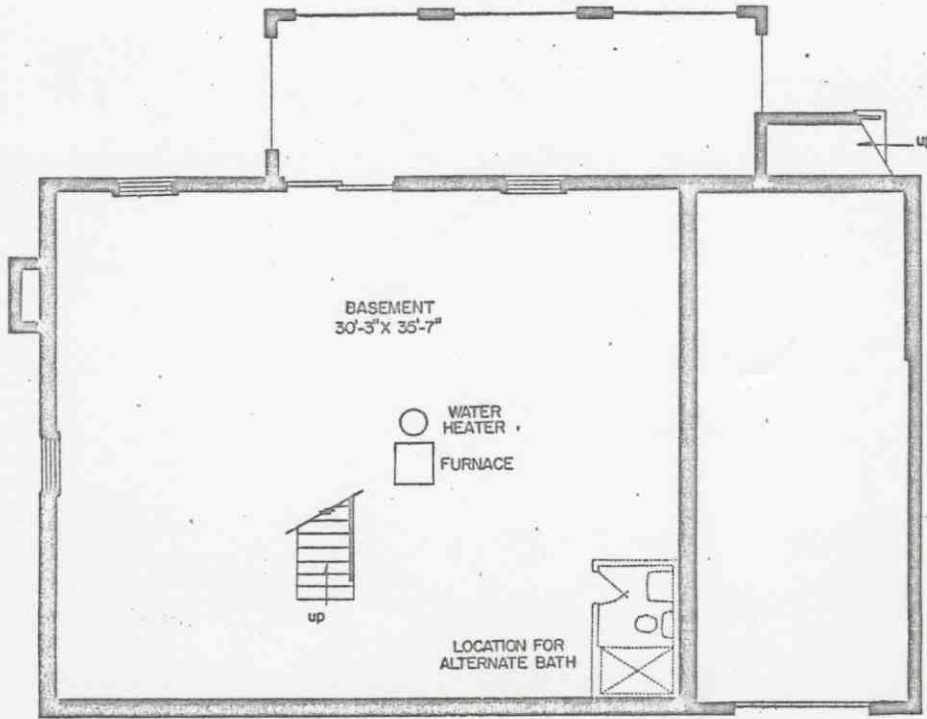
THE BALTIMORE

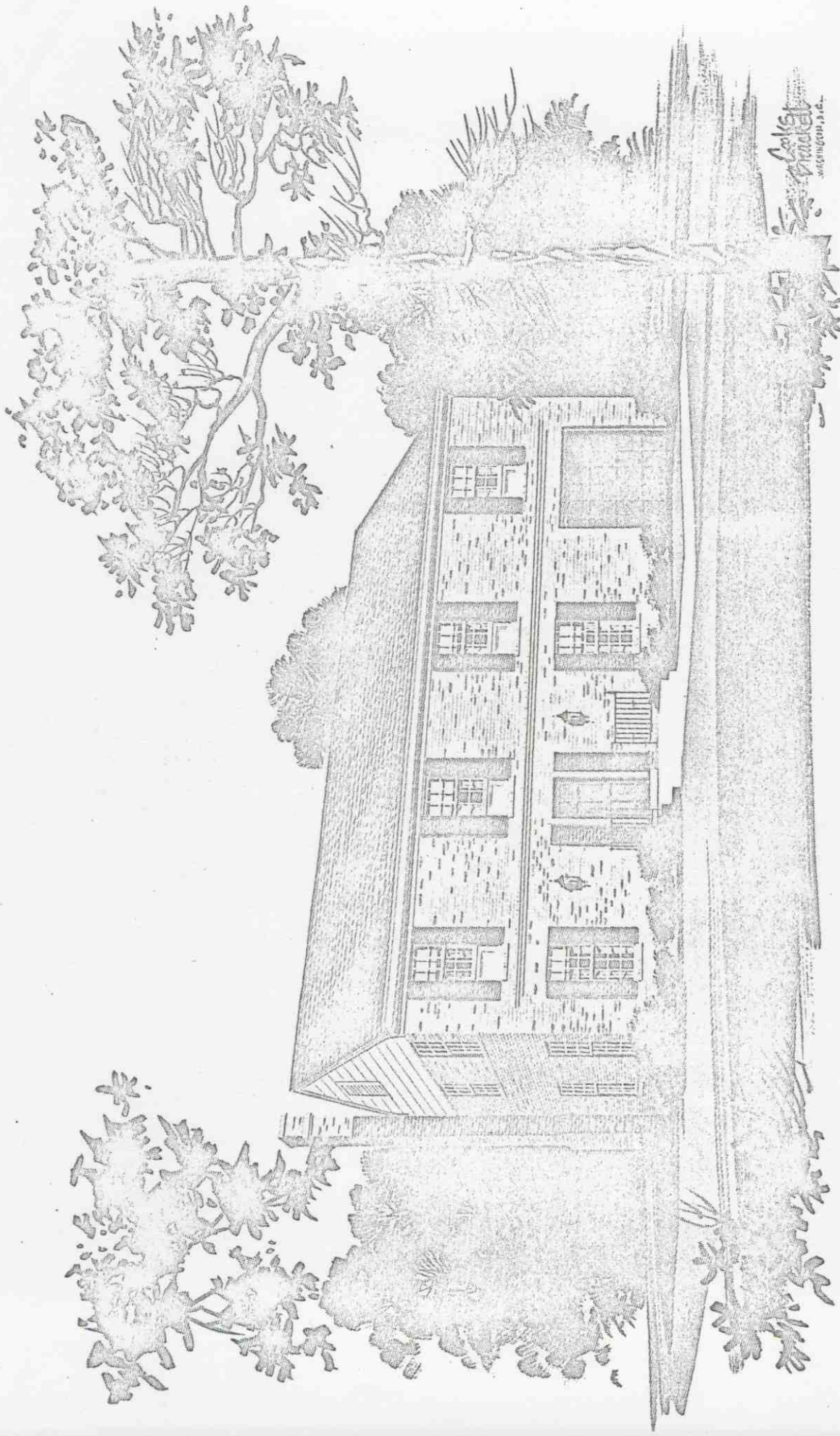


Co. K
Prickett
1911, B.C.

THE FREDERICK W.O.

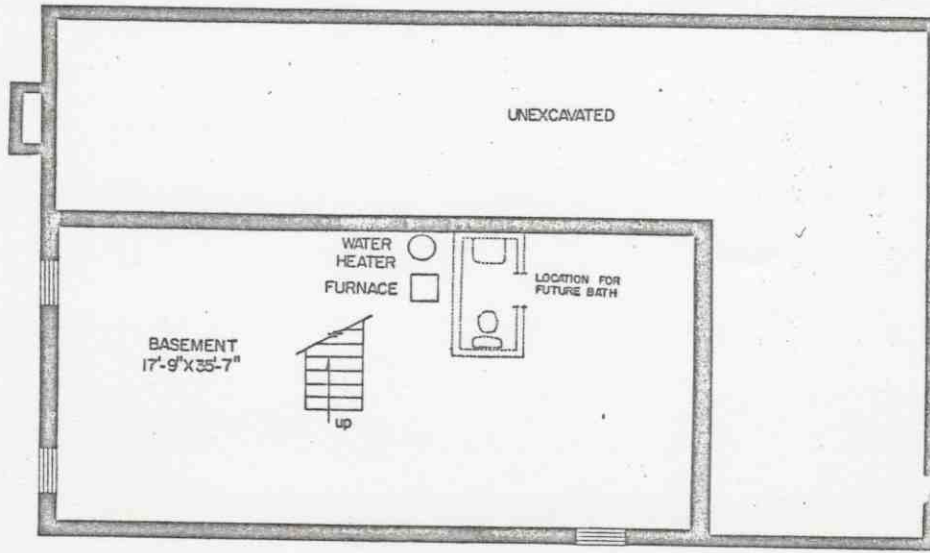
(COPYRIGHT: KETTLER BROTHERS, INC. AND PATTERSON AND WORLAND, A.I.A.)



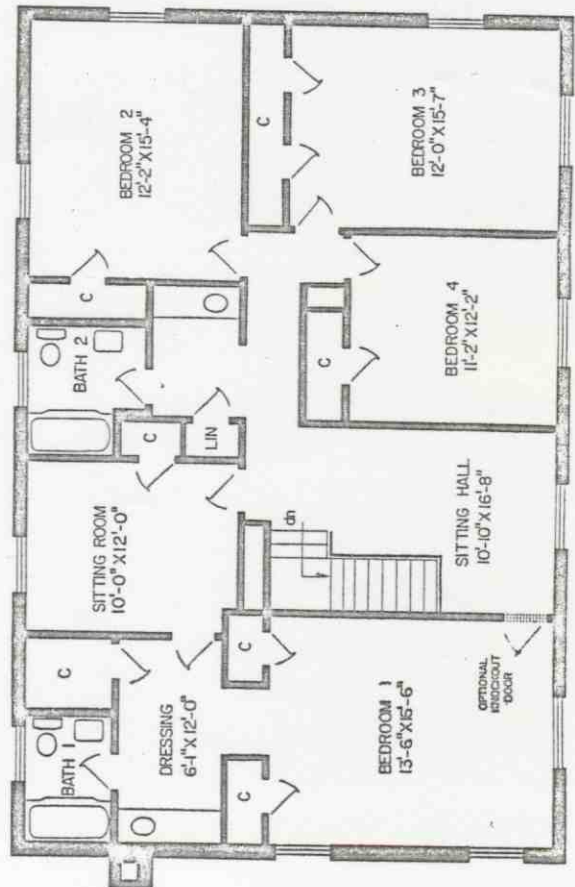


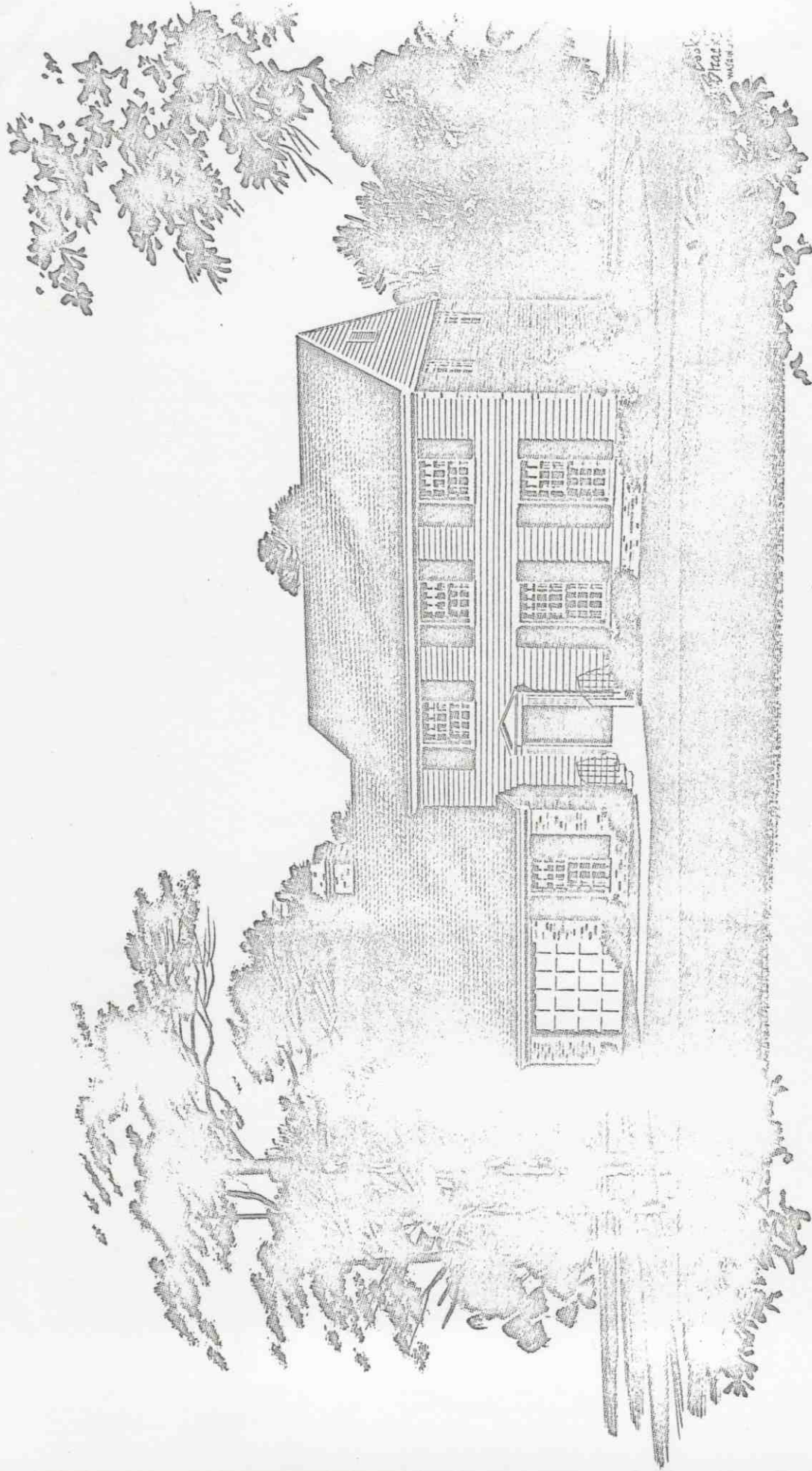
THE FREDERICK

(COPYRIGHT: KETTLER BROTHERS, INC. AND PATTERSON AND WORLAND, A.I.A.)



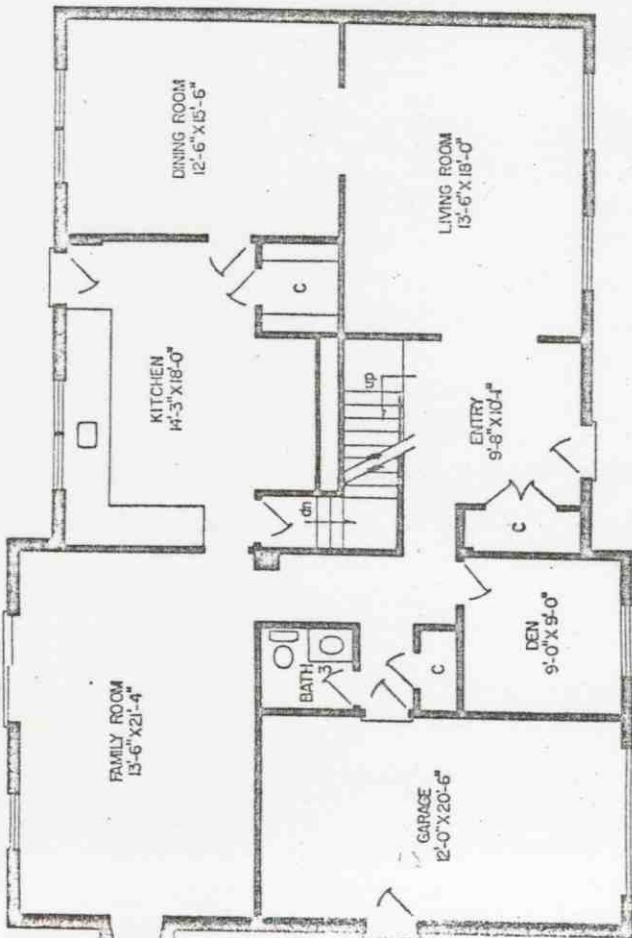
The Faddish



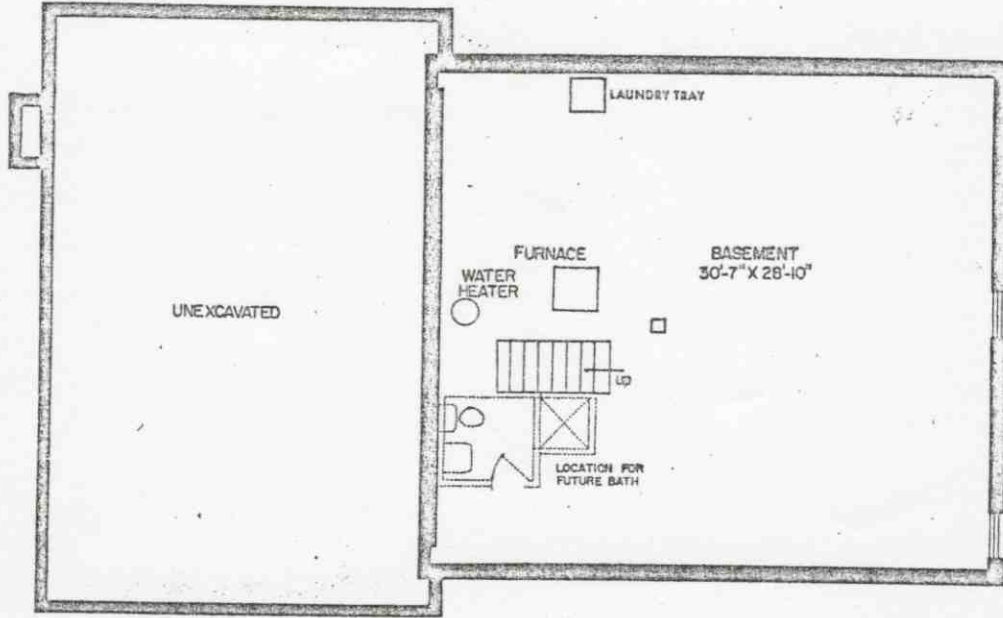
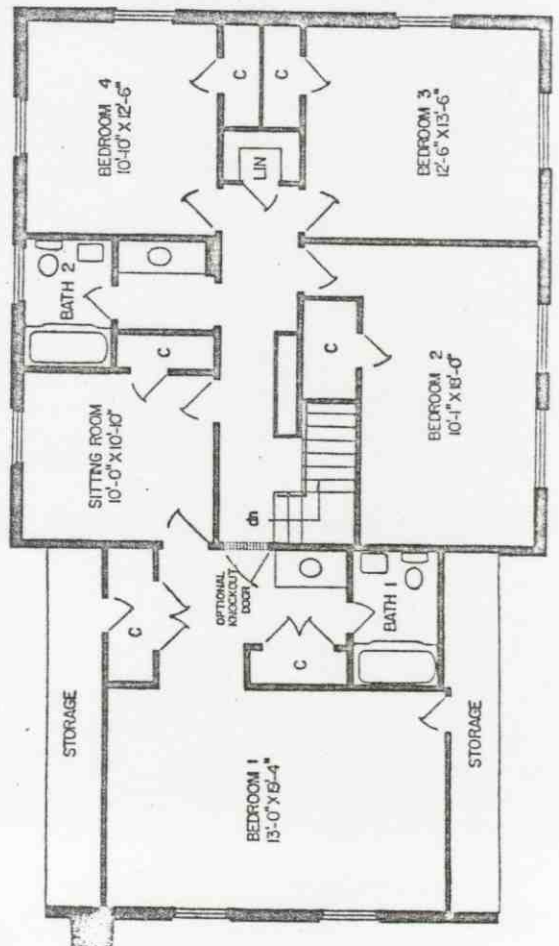


THE TALBOT

21



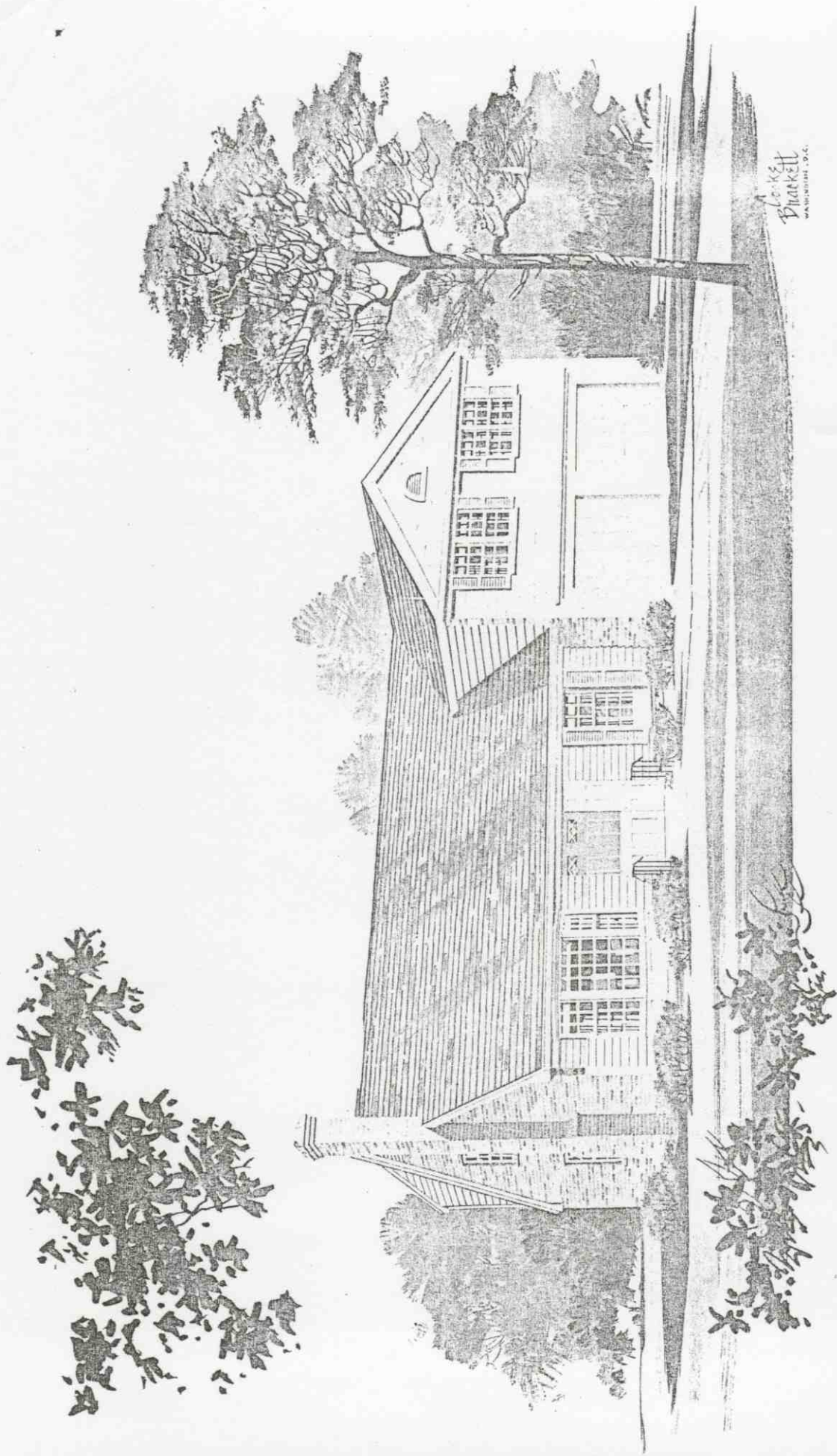
Talbot



1st floor 1650
 2nd floor 1350
 3000

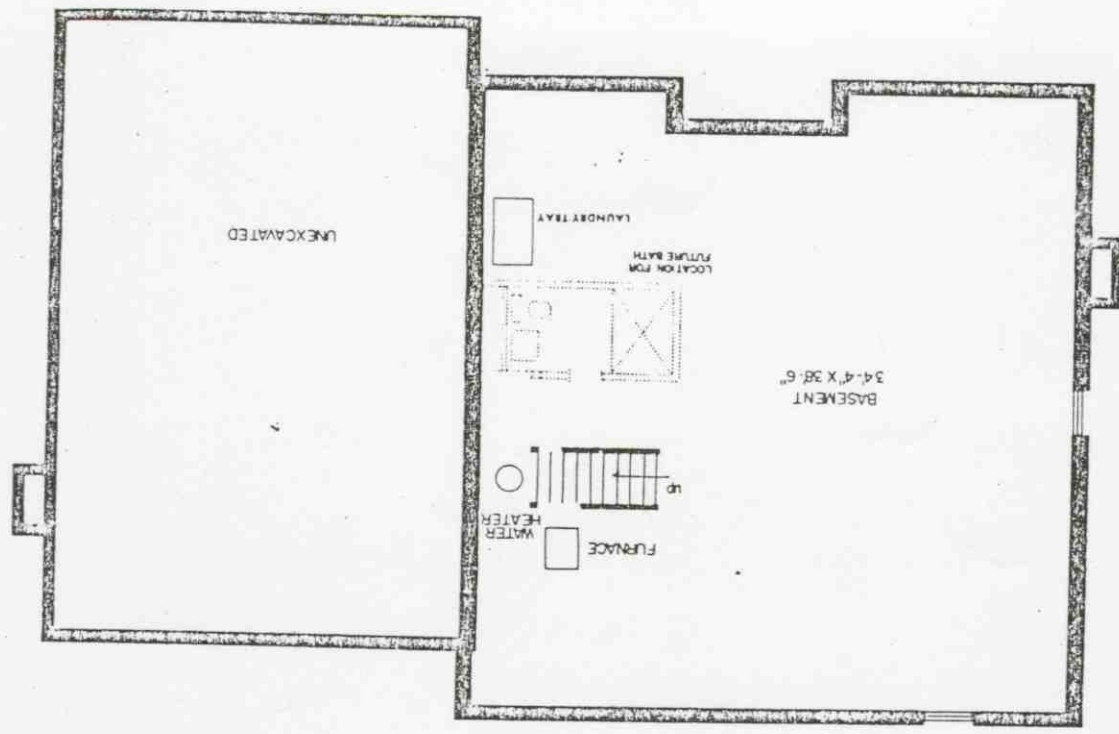
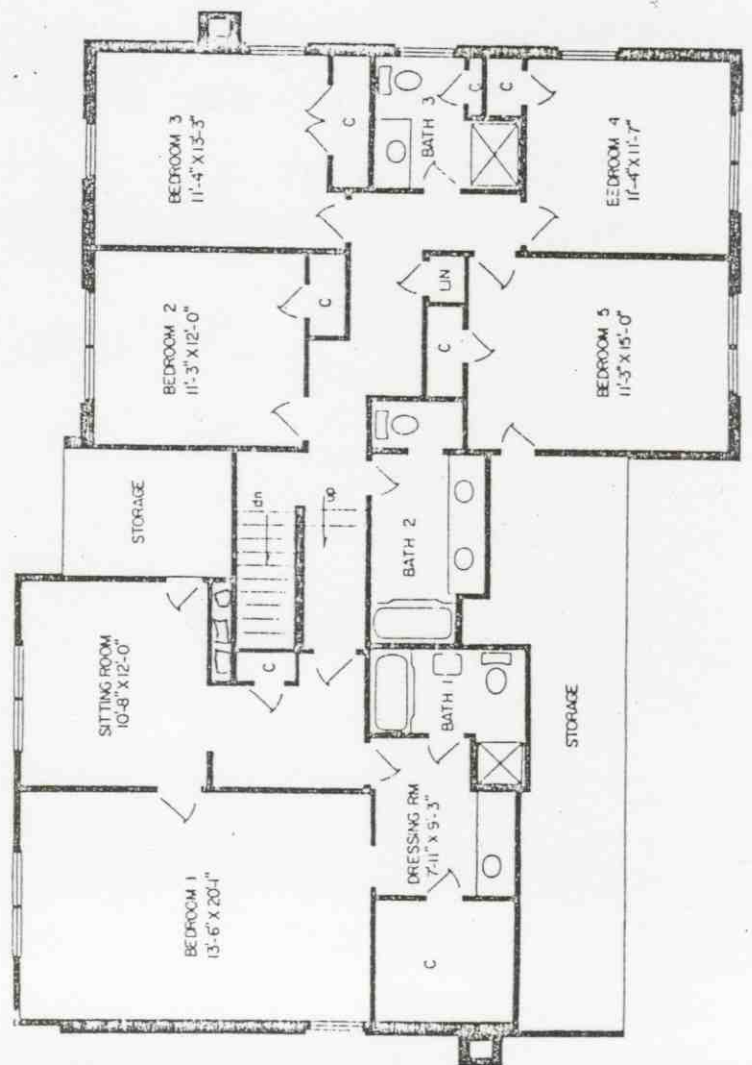
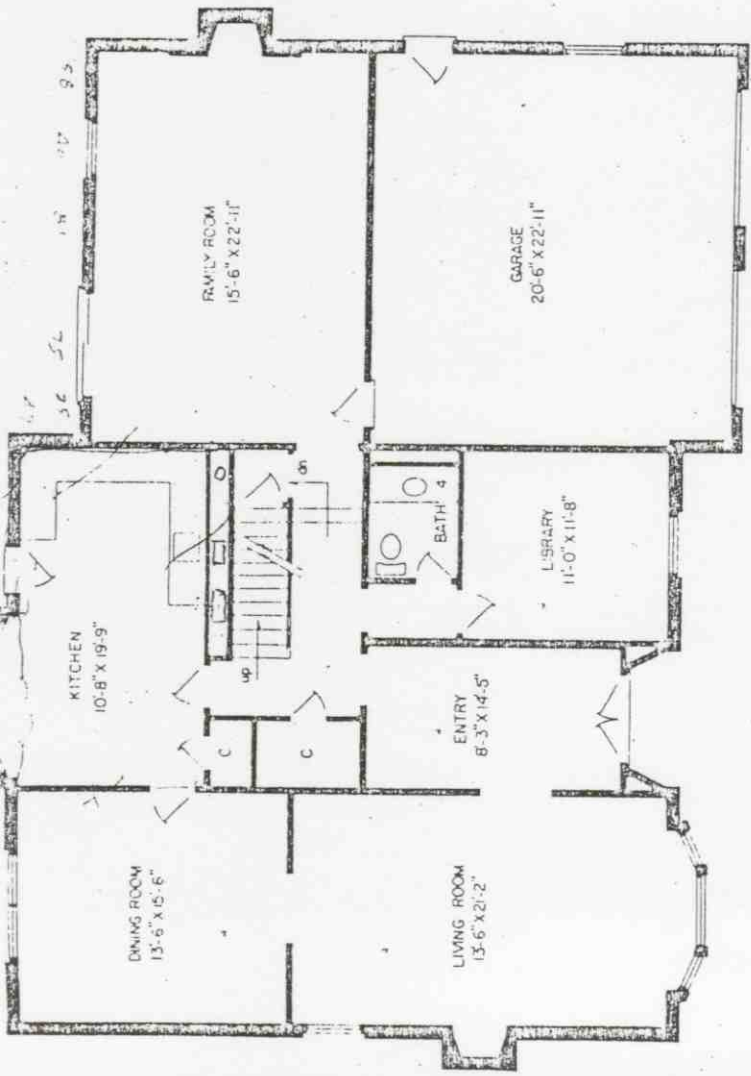
Length 53'

2005-5-11



THE QUEEN ANNE

(COPYRIGHT: KETTLER BROTHERS, INC. AND PATTERSON AND WORLAND, A.I.A.)



THE QUEEN ANNE